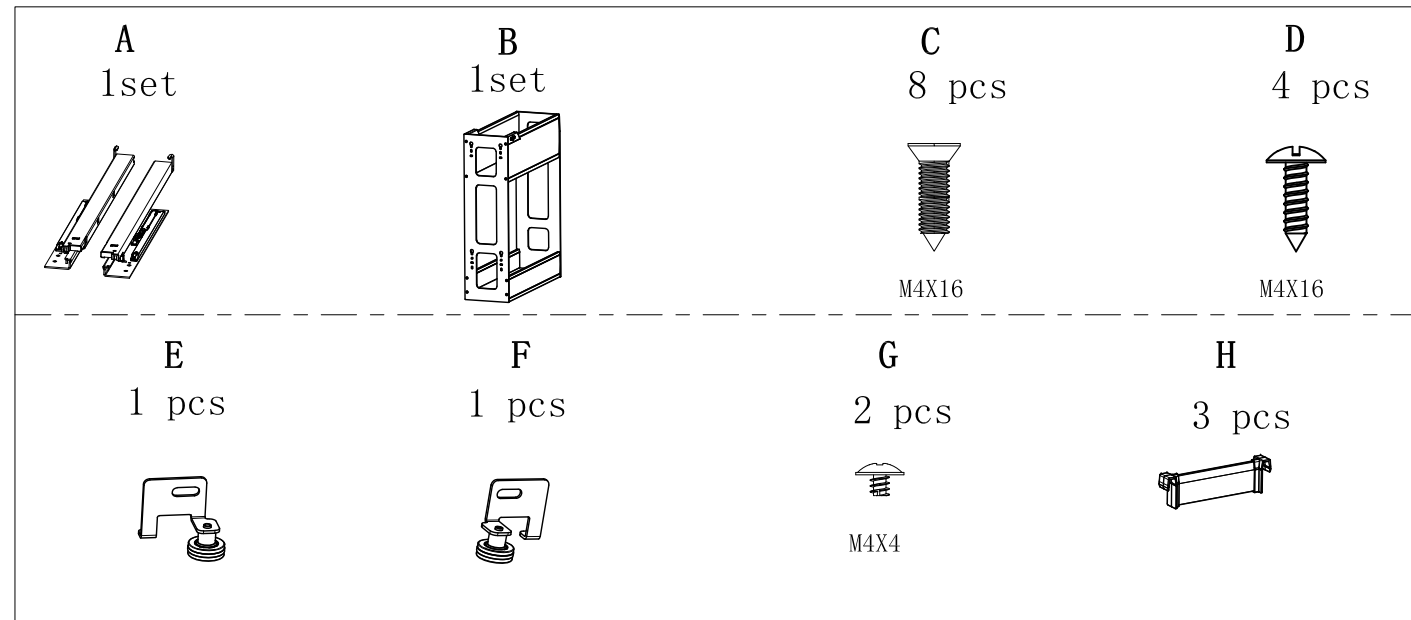


ASSEMBLY INSTRUCTION

1 COMPONENTS:



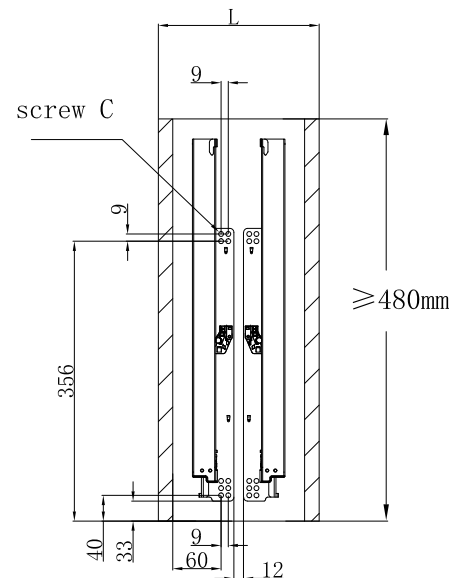
2 Specification & applicative cabinet width:

specification W*D*H mm	applicative cabinet width mm
164*552*471	200

- Notes: * Full extension soft-close slide, super smooth and stable, pass over 80000 cycles test
 * strong load-bearing 30Kg
 * Easy to assemble and disassemble

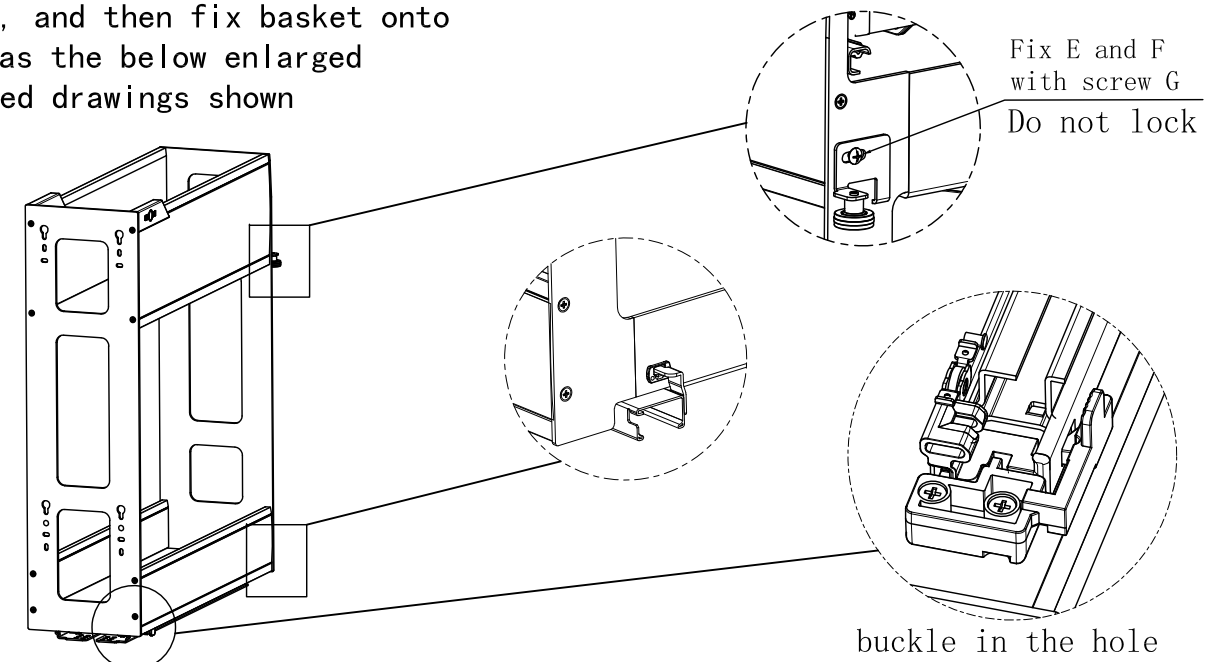
3 assembly steps:

(1) assembly size for slide



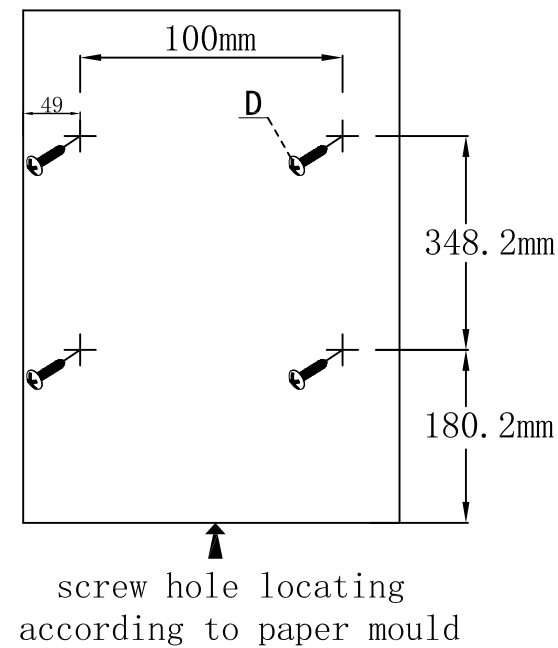
①

(4) First, the E and F fixed to the basket, and then fix basket onto slide as the below enlarged detailed drawings shown



②

(5) Drive screw D on the cabinet door but not fasten, as below drawing shown.

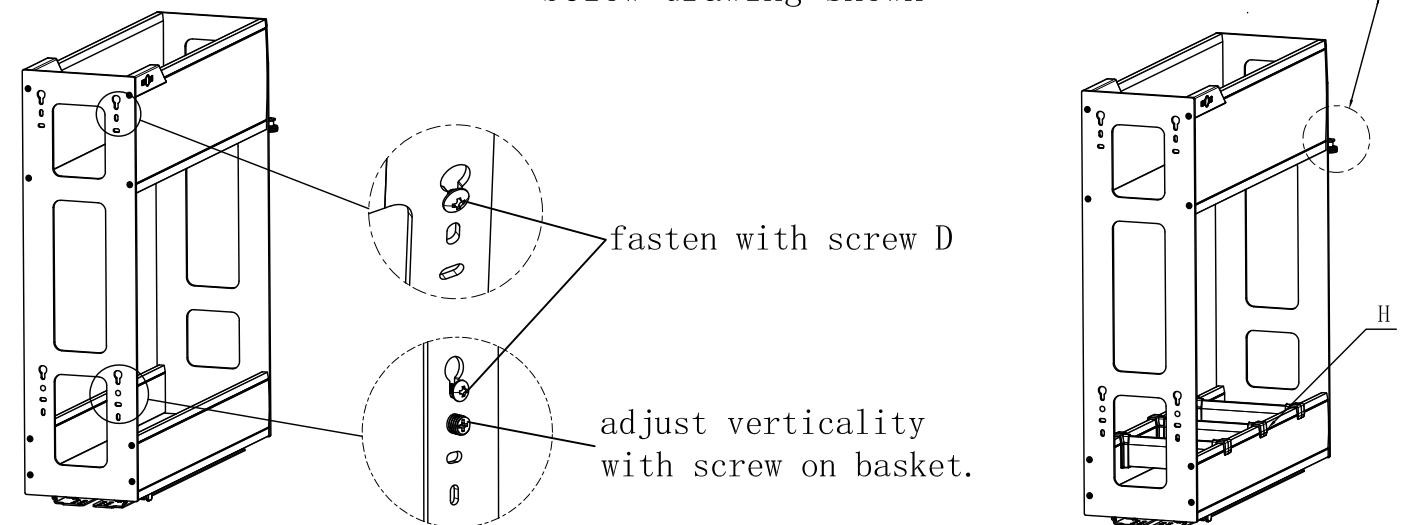


③

(6) Attach with cabinet door

Fix basket onto cabinet door as below drawing shown

Adjust and lock with the screw G



④